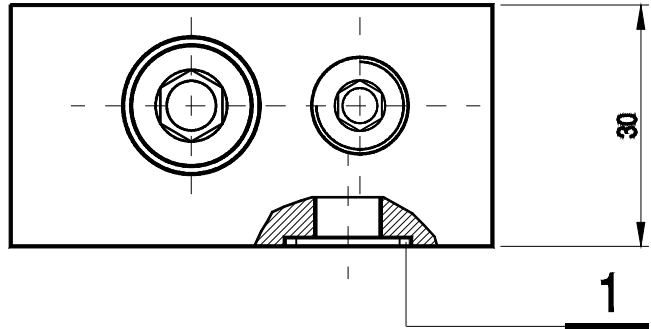


### APPLICATION

Rectifier sandwich plate type UZFC 5 is used to set flow direction on outlet from A to B independent of supply direction on inlet A1, B1. The valves are mounted under flow control valve type 2FRM 5 and have the same porting pattern.

### OVERALL AND CONNECTION DIMENSIONS

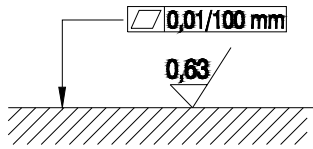


1. - Sealing ring 12,3 x 2,4 - 4 pcs

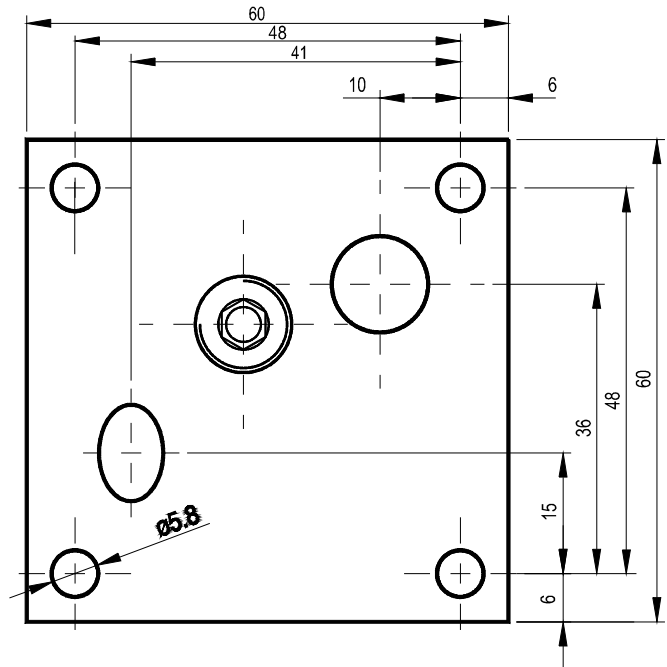
Valve fixing screw - M5 x 80 - 10.9 to PN-74/M-82302 (DIN 912) - 4 pcs

Tightening torque - 6 Nm.

The screws and subplate should be ordered separately.



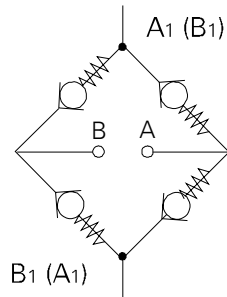
Required surface finish of mating subplate face.



### TECHNICAL DATA

Working medium	Mineral oil
Nominal fluid viscosity	37 mm <sup>2</sup> /s at temp. 328 K
Viscosity range	2,8 do 380 mm <sup>2</sup> /s
Optimum working temperature	313 - 328 K
Fluid temperature range	243 - 343 K
Filtration required	16 μm
Filtration required	10 μm
Cracking pressure	0,1 MPa
Weight	about 0,6 kg

## DIAGRAM



## HOW TO ORDER

Orders coded as below should be forwarded to the manufacturer.

**UZFC - 5 / 22** \*

**Rectifier sandwich plate**

**Nominal size**

Size 5 = 5

**Series number**

22 = 22  
(20-29) = installation and connection dim. unchanged

**Sealing**

Rubber = no designation  
Viton = V

**Further requirements in clear text**

( to agree with the manufacturer )

Example: **UZFC-5/22**

PONAR WADOWICE S.A.  
ul. Wojska Polskiego 29  
34-100 Wadowice  
tel. 033/ 823 39 43, 823 30 41  
fax 033/ 873 48 80  
e-mail: ponar@ponar-wadowice.pl

**PONAR**<sup>®</sup>  
**wadowice**